

ALPOLIC[®]

MATERIALS

DISTRIBUTORS/
FABRICATORS

(/company/fabricators-distributors/)

June 21, 2012 by ALPOLIC(<http://alpolic-usa.com/author/>) 0 comments

4



Project:	Sorensen Station Parkade and Transit Terminal
Location:	Red Deer, Alberta, Canada
Fabricator/Installer:	Igloo Erectors Ltd., Calgary, Alberta
Architect:	John Murray Architectural Associates Ltd., Red Deer, Alberta
General Contractor:	Shunda Consulting & Construction Management Ltd.
Exterior Wall Panel Manufacturer:	ALPOLIC
Products:	ALPOLIC 4mm FR; Custom Prismatic Finishes Series
Completion:	July 2010

Described as one of their “most interesting and challenging” jobs, fabricators at **Igloo Erectors Ltd.**(<http://www.iglooelectors.com/>) finished their work on the Sorensen Station Parkade and Transit Terminal in mid-2010. Named for one of Red Deer’s most well respected citizens, Gordon Lloyd Sorensen, the facility’s title pays homage to the local man who began the city’s bus system back in 1957.

Now open for daily and monthly parking, residents and businesses are offered over 300 monthly parking stalls as well as 100 daily spots. Additionally, the three-story building also allows for expanded Transit office space, public washrooms, kiosk rentals, and a customer service center.

The designers at John Murray Architectural Associates called for the use of ALPOLIC’s Prismatic series to enhance the aesthetic appearance of the new facility. Desiring a color that resembled orange juice, ALPOLIC customized a prismatic finish to be featured on the main areas of the Parkade, as well as several other personalized prismatic shades.

Those involved with the project commented on the “awe” of the color-changing ALPOLIC material, and are pleased with the facility’s contribution to Red Deer’s overall downtown revitalization.

Categories

- ALPOLIC Case Studies(<http://alpolic-usa.com/case-studies/>)
- ALPOLIC News(<http://alpolic-usa.com/alpolic-news/>)
- ALPOLIC Projects(<http://alpolic-usa.com/alpolic-projects/>)
- Architecture(<http://alpolic-usa.com/architecture/>)
- Design(<http://alpolic-usa.com/design/>)
- Sustainability(<http://alpolic-usa.com/sustainability/>)

All Posts(<http://alpolic-usa.com/news/>)

Subscribe to News

Enter your email address:

Subscribe

Submit Works

ALPOLIC ACM Panels Used On New Science Center To Achieve LEED Gold(<http://alpolic-usa.com/case-studies/alpolic-acm-panels-used-on-new-science-center-to-achieve-leed-gold/>)

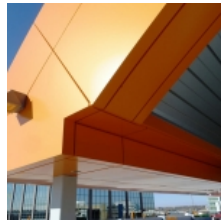
Vibrantly Tiled Exterior Design Revamps London’s Urban Landscape(<http://alpolic-usa.com/architecture/vibrantly-tiled-exterior-design-revamps-londons-urban-landscape/>)

ALPOLIC Furthers Its Presence In The Automotive Industry(<http://alpolic-usa.com/case-studies/alpolic-furthers-its-presence-in-the-automotive-industry/>)

Raising The Bar For Tropical And Organic Architecture(<http://alpolic-usa.com/architecture/raising-the-bar-for-tropical-and-organic-architecture/>)

Colorful Architecture Enlivens Community In Temperate Town(<http://alpolic-usa.com/architecture/colorful-architecture-enlivens-community-in-temperate-town/>)

Latest Comments



images © Igloo Erectors Ltd.
information © the City of Red Deer

ALPOLIC Products Used:

	Custom Color	Custom Color	Custom Color	Custom Color
3mm4MRT-G70 MRT Magma(<a href="http://alpoli-
usa.com/samples/">http://alpoli- usa.com/samples/)	4mm4SCP-G70 SCP Mesa (<a href="http://alpoli-
usa.com/samples/">http://alpoli- usa.com/samples/)	4mm4SNP-G70 SNP Marsh(<a href="http://alpoli-
usa.com/samples/">http://alpoli- usa.com/samples/)	4mm4RXT-G70 RXT Harvest Moon(<a href="http://alpoli-
usa.com/samples/">http://alpoli- usa.com/samples/)	4mm4ERP-G70 ERP Blush(<a href="http://alpoli-
usa.com/samples/">http://alpoli- usa.com/samples/)

4

Filed Under: ALPOLIC Case Studies([http://alpoli-
usa.com/case-studies/](http://alpoli-
usa.com/case-studies/))

Tagged With: ACM ([http://alpoli-
usa.com/tag/acm/](http://alpoli-
usa.com/tag/acm/)), ALPOLIC([http://alpoli-
usa.com/tag/alpoli-
usa.com/](http://alpoli-
usa.com/tag/alpoli-
usa.com/)), ALPOLIC
panels([http://alpoli-
usa.com/tag/alpoli-
panels/](http://alpoli-
usa.com/tag/alpoli-
panels/)), ALPOLIC
USA([http://alpoli-
usa.com/tag/alpoli-
usa/](http://alpoli-
usa.com/tag/alpoli-
usa/)), ALPOLIC/fr([http://alpoli-
usa.com/tag/alpoli-
fr/](http://alpoli-
usa.com/tag/alpoli-
fr/)), aluminum
composite
material([http://alpoli-
usa.com/tag/aluminum-
composite-
material/](http://alpoli-
usa.com/tag/aluminum-
composite-
material/)), aluminum
composite
panel([http://alpoli-
usa.com/tag/aluminum-
composite-
panel/](http://alpoli-
usa.com/tag/aluminum-
composite-
panel/)), architectural
materials([http://alpoli-
usa.com/tag/architectural-
materials/](http://alpoli-
usa.com/tag/architectural-
materials/)),
architecture([http://alpoli-
usa.com/tag/architecture-
2/](http://alpoli-
usa.com/tag/architecture-
2/)), building
([http://alpoli-
usa.com/tag/building/](http://alpoli-
usa.com/tag/building/)),
building
materials([http://alpoli-
usa.com/tag/building-
materials/](http://alpoli-
usa.com/tag/building-
materials/)),
construction([http://alpoli-
usa.com/tag/construction/](http://alpoli-
usa.com/tag/construction/)),
design([http://alpoli-
usa.com/tag/design-2/](http://alpoli-
usa.com/tag/design-2/)),
fire
resistant([http://alpoli-
usa.com/tag/fire-
resistant/](http://alpoli-
usa.com/tag/fire-
resistant/))

Leave a Comment

Name (required)

Mail (will not be published) (required)

Website

joel valdivia barboza on Colorful Painted Glass Facade Contrasts Classical Architecture([http://alpoli-
usa.com/architecture/colorful-
painted-glass-facade-contrasts-
classical-architecture/#comment-
2163](http://alpoli-
usa.com/architecture/colorful-
painted-glass-facade-contrasts-
classical-architecture/#comment-
2163))

ALPOLIC Project: "Leaf" by Folditure:
furniture([http://furniture.yesihost.com/blog/2012-
project-leaf-by-folditure-
furniture/](http://furniture.yesihost.com/blog/2012-
project-leaf-by-folditure-
furniture/)) on ALPOLIC ACM Panels
Used In New Fold Up Furniture
Design By Folditure([http://alpoli-
usa.com/case-studies/alpoli-acm-
panels-used-in-new-fold-up-
furniture-design-by-
folditure/#comment-1957](http://alpoli-
usa.com/case-studies/alpoli-acm-
panels-used-in-new-fold-up-
furniture-design-by-
folditure/#comment-1957))

joel valdivia barboza on Plants
Sprout Through A Perforated
Aluminum Facade In
Japan([http://alpoli-
usa.com/architecture/plants-
sprout-through-a-perforated-
aluminum-facade-in-
japan/#comment-1692](http://alpoli-
usa.com/architecture/plants-
sprout-through-a-perforated-
aluminum-facade-in-
japan/#comment-1692))

ALPOLIC on Underground
Skyscraper Serves As Preservative
Architecture([http://alpoli-
usa.com/architecture/underground-
skyscraper-serves-as-preservative-
architecture/#comment-1288](http://alpoli-
usa.com/architecture/underground-
skyscraper-serves-as-preservative-
architecture/#comment-1288))

Sandra M. Goda-
Dino(<http://www.appliedminds.com/>)
on Underground Skyscraper Serves
As Preservative
Architecture([http://alpoli-
usa.com/architecture/underground-
skyscraper-serves-as-preservative-
architecture/#comment-1252](http://alpoli-
usa.com/architecture/underground-
skyscraper-serves-as-preservative-
architecture/#comment-1252))

Archives

Select Month

MITSUBISHI PLASTICS COMPOSITES AMERICA, INC.

©2011 All Rights Reserved. ALPOLIC® Is A Registered Trademark Of Mitsubishi Plastics, Inc.

